



**Messages and Communications: GDOE Citizen Centric Report**

1 message

**Speaker Won Pat** <speaker@judiwonpat.com>

Wed, Sep 18, 2013 at 8:28 AM

To: Guam Legislature Clerks Office <clerks@guamlegislature.org>

9/18/2013 9/18/2013 Department of Education Office of the Superintendent Citizen Centric Report 32-13-789

----- Forwarded message -----

From: **Jon Fernandez (Superintendent)** <jonfernandez@gdoe.net>  
Date: Tue, Sep 17, 2013 at 8:02 PM  
Subject: GDOE Citizen Centric Report  
To: Speaker Won Pat <speaker@judiwonpat.com>, dfbrooks@guamopa.org  
Cc: "Taling M. Taitano" <tmtaitano@gdoe.net>

32-13-789  
9-18-13  
B. Kam  
Received: [Signature]

Hafa Adai Madam Speaker and Chief Auditor!

In compliance with 1 GCA Section 1922, I have attached an electronic copy of GDOE's Citizen Centric Report. The report has also been posted to our website at:  
<https://sites.google.com/a/gdoe.net/financial-administration/reports/citizen-s-centric-report>

Thank you for your continuing support of our schools.

**Jon Fernandez**  
Superintendent  
Guam Department of Education  
PO Box DE, Hagatna, GU 96932

Email: superintendent@gdoe.net  
Office: (671) 300-1547  
Fax: (671) 472-5009

2013 SEP 18 AM 8:38 [Signature]

*Ufisinan I Etmås Ge'helo'Gi Liheslaturan Guåhan*  
**Office of Speaker Judith T. Won Pat Ed.D.**  
*Kumiten Idukasion yan Laibirihan Publeko*  
**Committee on Education and Public Libraries & Women's Affairs**

155 Hesler Place, Suite 201, Hagatna, Guam 96910  
Tel: (671) 472-3586 Fax: (671) 472-3589  
[www.guamlegislature.com](http://www.guamlegislature.com) / [speaker@judiwonpat.com](mailto:speaker@judiwonpat.com)



# Guam Department of Education

## Citizen's Centric Report

AUGUST 2013

FY 2012  
SY 2011-2012

*In this issue*

ABOUT GDOE	1
SATIO	2
FINANCES	3
UPDATES	4

### Guam Department of Education Goals

- Goal # 1 All students will graduate from high school prepared to pursue post-secondary education on or off-island or to assume gainful employment with the private or public sector
- Goal # 2 All students will successfully progress from grade to grade and from one level of schooling to another in order to maximize opportunities to successfully graduate from high school
- Goal # 3 All Guam Department of Education personnel will meet high standards for qualifications and on-going professional development and will be held accountable for all assigned responsibilities
- Goal # 4 All Guam Department of Education's school facilities will meet high standards for health and safety and provide optimal conditions for learning objectives
- Goal # 5 All Guam Department of Education's operations will maximize the critical uses of limited resources and meet high standards of accountability

### About Us

GDOE is a single unified school district consisting of grades Kindergarten through 12. Our 26 Elementary Schools, 8 Middle Schools, 5 High Schools, and one alternative school serves over 31,000 students, and is managed by the 9 – member Guam Education Board (GEB). Despite the operational and financial challenges the Department has faced in recent years, the teachers, administrators, and support staff continue to remain focused on our mission to **“Prepare all students for life, Promote Excellence, and Provide Support!”**

### Curriculum and Assessment Standards News

In February 2012, the GEB voted to adopt the Common Core State Standards (CCSS) initiated by the National Governor's Association and the Chief Council for State School Officers. The CCSS for English/Language Arts & Literacy in History/Social Studies, Science, and Technical subjects and the Standards for Mathematical Practice are the culmination of a broad-based effort to fulfill the charge issued by the states to create the next generation of K-12 standards in order to help ensure all students are college and career ready by the time they exit high school.

### School Performance Report Card

Pursuant to Public Law 26-26, the purpose of the school report card is to monitor trends among schools and its progress toward achieving the goals in the mission statement. The school report card contains information on demographics, student achievement, special program offerings, faculty, budget, and exemplary programs. School report cards can be viewed at [www.gdoe.net](http://www.gdoe.net).

### Accreditation News

Twenty-one of GDOE's 40 schools are accredited by the Western Association of Schools and Colleges (WASC). In SY 12-13, Vicente SA Benavente Middle and Southern High schools were each visited and granted 6 Year Accreditation status by WASC.



By the Numbers SY 2012-2013 (as of September 30, 2012)	
Enrollment	
*Students are counted in their respective school population.	
Elementary	14,459
Middle	7,219
High	10,020
Alternative	*124
<b>Total</b>	<b>31,698</b>
School Sites	
Elementary	26
Middle	8
High	5
Alternative	1
<b>Total</b>	<b>40</b>
Personnel By Funding (as of December 2012)	
Local	2,989
Federal	866
<b>Total</b>	<b>3,855</b>

	GRADUATION		DROPOUT			
	SY 10-11	SY 11-12	SY 10-11	SY 10-11	SY 11-12	SY 11-12
High School	Number	Number	Number	Rate (%)	Number	Rate (%)
G. Washington	424	497	85	3.20%	80	3.10%
J.F. Kennedy	333	372	126	6.00%	105	5%
Okkodo	273	274	127	9.10%	105	7.70%
S. Sanchez	315	356	92	5.00%	102	5%
Southern	296	269	211	14.00%	130	8%
<b>Total</b>	<b>1,641</b>	<b>1,768</b>	<b>641</b>	<b>6.80%</b>	<b>522</b>	<b>5.30%</b>

### Graduation / Dropout Info

- In SY 11-12, there were **1,768** graduates, representing a **127 increase or 7.74%** change from the previous SY.
- In SY 11-12, there were 522 students or 5.3% who dropped out, 119 less students in SY 10-11.
- Southern High School had the greatest decrease in the dropout rate from SY10-11 (14% to 8%).

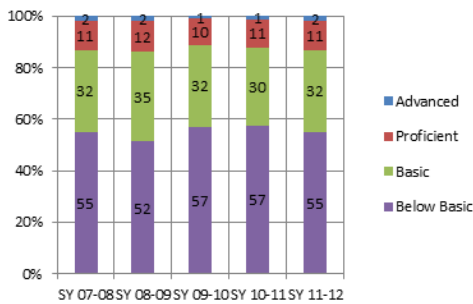
“Our educational community prepares all students, promotes excellence, and provides support”

# SAT 10

The **SAT 10** performance standards are content-referenced scores that reflect what students know and should be able to do in given subject areas. As a norm-referenced test, student scores are compared to the performance of a norm group, comprised of a national sample. SAT 10 performance standard levels are: **Below Basic** indicates little or no mastery of fundamental knowledge and skills; **Basic** indicates partial mastery of the knowledge and skills that are fundamental for satisfactory work; **Proficient** represents solid academic performance, indicating students are prepared for the next grade; and **Advanced** signifies superior performance, beyond grade-level mastery. In SY 11-12, 27,253 GDOE students participated in the SAT 10.

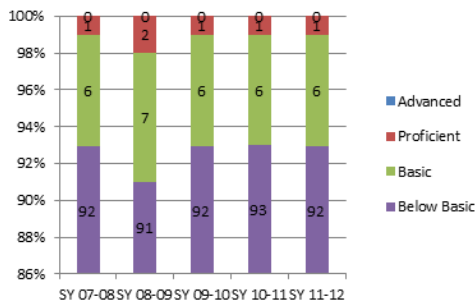
Across the board, while scores continue to improve in all subject areas, the following schools are noteworthy. **ELEMENTARY:** P.C. Lujan 1<sup>st</sup> in 1<sup>st</sup> grade Reading, 2<sup>nd</sup> grade Science surpassing the national average; Agana Heights coming in first in several subjects at different grades; Inarajan placing 2<sup>nd</sup> in 1<sup>st</sup> grade Language, Math, Environment, and 1<sup>st</sup> in 3<sup>rd</sup> grade Reading and Language; and Carbullido doing well in placement. **MIDDLE:** Oceanview 1<sup>st</sup> in 6<sup>th</sup> grade Complete Battery, Reading, Language Arts and 2<sup>nd</sup> in Math and Social Science, 2<sup>nd</sup> in 8<sup>th</sup> grade; Inarajan 1<sup>st</sup> in 6<sup>th</sup> grade Math and 8<sup>th</sup> grade Science; V.S.A. Benavente 1<sup>st</sup> in 7<sup>th</sup> grade Math; and F.B. Leon Guerrero 1<sup>st</sup> in 8<sup>th</sup> grade Reading and 8<sup>th</sup> grade Social Science. **HIGH:** George Washington top performing school in 9<sup>th</sup> and 10<sup>th</sup> grades, 1<sup>st</sup> in 12<sup>th</sup> grade Social Science; John F. Kennedy also top performing school in 9<sup>th</sup> and 10<sup>th</sup> grades, 1<sup>st</sup> in all subjects and Complete Battery in 11<sup>th</sup> grade, surpassing national average in Science, 1<sup>st</sup> in all 12<sup>th</sup> grade subjects, except Social Science.

GRADE 12 READING: SY07-08 TO SY11-12



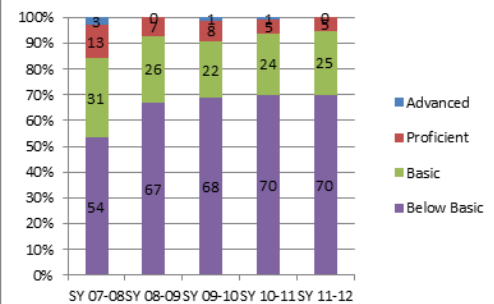
- In SY 11-12, 13% of 12th graders performed at advanced and proficient levels in reading, as compared to 12% in SY 10-11, an increase of 1 percentage point.
- In SY 11-12, 32% of 12 graders performed at basic and below basic levels, as compared to 30% and 57% in SY10-11.

GRADE 12 MATH: SY07-08 TO SY11-12



- In SY 11-12, 1% of 12th graders performed at the proficient level in math as compared to the same 1% in SY 10-11.
- In SY 11-12, 92% of 12 graders performed at basic and below basic levels, as compared to 93% in SY 10-11, a decrease of 1 percentage point.

GRADE 12 LANGUAGE: SY07-08 TO SY11-12



- In SY 11-12, 5% of 12th graders performed at the proficient level, as compared to 6% in SY10-11 in proficient and advance levels, a decrease of 1 percentage point.
- In SY 11-12, 95% of 12th graders performed at basic and below basic levels, as compared to 94% in SY 10-11, an increase of 1 percentage point.

NATIONAL SCHOOL LUNCH & B-FAST PROGRAM	LUNCH					BREAKFAST						
	FREE	PAID	REDUCED	TOTAL LUNCHES SERVED	* ADP	ENROLLMENT	FREE	PAID	REDUCED	TOTAL B-FAST SERVED	* ADP	ENROLLMENT
SY 2012-2013**	2,221,227	203,365	104,896	2,529,488	14,053	31,491	1,246,865	60,748	33,236	1,340,849	7,449	31,491
SY 2011-2012**	2,230,654	256,641	115,835	2,603,130	14,462	30,983	1,229,205	79,893	31,786	1,340,884	7,449	30,983
Variance	-9,427	-53,276	-10,939	-73,642	-409	508	17,660	-19,145	1,450	-35	0	508
% of Variance	-0.42%	-20.76%	-9.44%	-2.83%	-2.83%	1.64%	1.44%	-23.96%	4.56%	0.00%	0.00%	1.64%

\* Average Daily Participation; \*\* SY12-13 figures are unaudited, subject to adjustments, FY11-12 figures are updated due to audits & evaluations.

**GDOE CNP** Table to the left, is the number of meals served under GDOE's Child Nutrition Program (School Lunch Program) for SY 11-12 and SY 12-13.

**Special Education:** GDOE's Division of Special Education Part B Program provides special education and related services to eligible children with disabilities. Total number of students served as of Sept. 30, 2012 was 1,999, or 6% of total

**DEED Program** SAT 10 Distribution of DEED (Guam Department of Education Extended Day) enrolled students and GDOE students (Grades 1 through 5) in the proficient and advanced levels depicted right for SY10-11 and SY11-12.

Retrieved from Ready Results NCS Pearson, Inc. <https://education.pearsonassessments.com/pai/ea/ordering/ReadyResults.htm>.



PROFICIENT/ADVANCED LEVELS		SY 10-11 Reading	SY 11-12 Reading	SY 10-11 Language	SY 11-12 Language	SY 10-11 Math	SY 11-12 Math
Grade 1 DEED		71%	75%	20%	22%	44%	51%
Grade 1 GDOE		52%	47%	3%	10%	32%	28%
Grade 2 DEED		23%	51%	5%	12%	22%	36%
Grade 2 GDOE		17%	15%	3%	4%	13%	16%
Grade 3 DEED		30%	23%	14%	15%	28%	22%
Grade 3 GDOE		18%	14%	10%	9%	15%	12%
Grade 4 DEED		32%	28%	26%	22%	26%	30%
Grade 4 GDOE		17%	16%	13%	15%	14%	16%
Grade 5 DEED		18%	21%	21%	24%	12%	17%
Grade 5 GDOE		11%	12%	13%	12%	7%	9%

enrollment. Table (below) shows the number of children served, ages 3 thru 21; the number of children with disabilities enrolled in public schools, and the number and percent in each disability category.

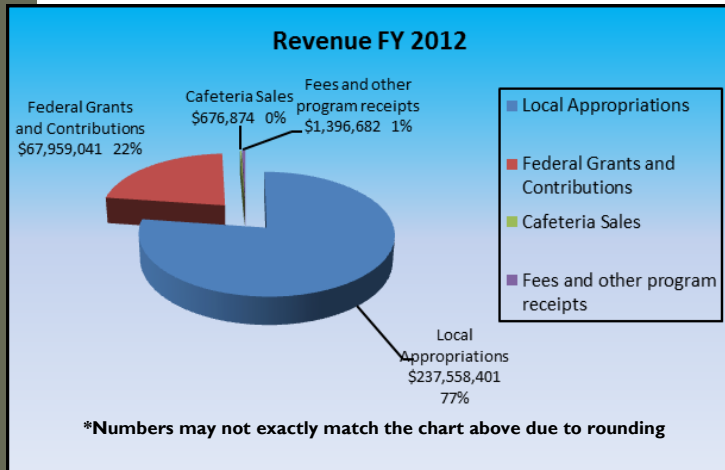
Disability Categories	# of Students in the Disability Category	% Students in the Disability Category
Autism	147	7%
Deaf-Blind	1, N size < 5	<1%
Developmental delay (0-5 only)	57	3%
Emotionally Disturbed	116	6%
Hearing Impaired	46	2%
Intellectual Disability	80	4%
Multiple Disabilities	84	4%
Orthopedically Impaired	16	1%
Other Health Impaired	184	9%
Specific Learning Disability	1022	51%
Speech/language Impaired	227	11%
Traumatic Brain Injury	2, N size < 5	<1%
Visually Impaired	17	1%
<b>TOTAL</b>	<b>1,999</b>	<b>100%</b>

Child Count for Children ages 3-21+ as of September 30, 2012

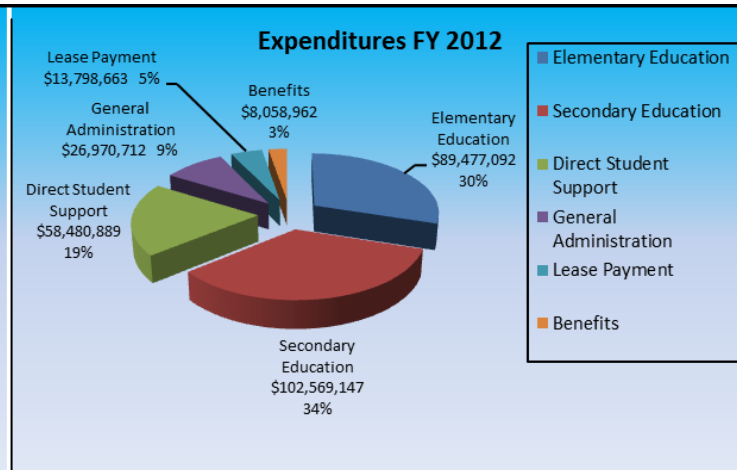
“Our educational community prepares all students, promotes excellence, and provides support”

# FINANCES

## Revenue Breakdown FY 2012



## Expenditure Breakdown FY 2012



- The total revenues for the year ended September 30, 2012 is **\$307,590,998**.
- As a Government of Guam line agency, GDOE receives **77.2%** of its funds through **Local Appropriations**, which include General Fund, Territorial Education Facilities Fund, Interscholastic Sports Fund, Health & Physical Activities Fund, Public Library Resources Fund, Textbook Fund and Chamorro Studies.
- **22.09%** or **\$67,959,041** of revenue is from **Federal Grants and Contributions**.
- **\$2,073,556** from **Cafeteria Sales, Fees and Other Program Receipts** make up the remainder of the revenue for GDOE.
- The total expenditures for the year ended September 30, 2012 is **\$299,355,465**. **64.1%** or **\$192,046,239** is for **Elementary and Secondary Education**. These expenditures include; salaries, benefits, contractual services, utilities, supplies, and equipment.
- **19.54%** of expenditures are attributed to **Direct Student Support**, to include: special education, gifted and talented program, vocational technical education, and headstart.
- **9.01%** was spent on **General Administration**.
- **4.61%** of expenditures were for the **Lease payment** for Adacao Elementary, Liguán Elementary, Astumbo Middle, Okkodo High, and John F. Kennedy High School.
- **2.69%** or **\$8,058,962** was expended on retiree healthcare benefits
- **The primary** component of GDOE's expenditures are from salaries and benefits. Salaries represented **\$147,665,789**, while **\$59,317,217** went to benefits, for a total of **\$206,983,006** or **69.14%** in FY 12.
- Utilities (power, water, telephone) expenses make up **5.52%** or **\$16,526,958** of expenditures.

### Additional Discussion

- GDOE's total local appropriation increased from \$189,867,066 in FY11 to \$228,171,378 in FY12. From FY11 to FY12, total assets increased by \$5.9 million and correspondingly, total liabilities decreased by \$11.2 million plus a prior-year adjustment of \$2.2 million, resulting in an overall increase in net assets of \$19.4 million.
- Total Revenues in FY12 decreased by \$25.7M, from \$333.2M to \$307.5M, \$41.4M more in local appropriations and \$68.2M less in Federal Grants and Contributions when compared to FY11; the later largely due to a one-time receipt of federal American Recovery Reinvest Act (ARRA) funding, for capital improvement projects.

- The relocation of Untalan Middle School to facilities in Tiyan in February 2012 resulted in an additional \$7,734,935 in lease payments in FY12, under a government lease authorized by P.L. 29-19.
- In FY12 GDOE installed various financial modules in its new Financial Management Information System (FMIS), purchased in 2011 under a Comprehensive Corrective Action Plan (CCAP) with the U.S. Dept of Education to remove GDOE from its 'High Risk' grantee status. The Single Audit Report and CCAP are available on GDOE website: [www.gdoe.net](http://www.gdoe.net) Executive Order 2011-014 froze employee increments in October 2011, however, the freeze was lifted in May 2013 by Executive Order 2013-04 ordering payments of the accrued increments. GDOE is awaiting the release of \$4 million in cash for retro payments.
- GDOE received \$2.8 million in U.S. Dept. of Interior funding in July 2012; GDOE teachers were allotted \$500 to purchase instructional supplies, classroom materials and nearly a million was distributed to GDOE principals for operational supplies and equipment.

### Financial Updates

- FY13 appropriations (P.L. 31-233) totaled \$214 million and per BBMR Circular 12-01, a 15% reserve or \$30,234,908 was placed on GDOE's FY13 allotments. \$687,500 was deducted from GDOE's FY13 operating budget to Guam's first charter school, the Guahan Academy Charter School pursuant to a provision in the FY13 Budget Act (P.L. 31-233) allocating \$5,500 per GACS student enrolled. GACS opened on August 19, 2013 and will be mirroring GDOE's SY13-14 calendar.
- Executive Order 2013-05 signed in June 2013 ordered funding be provided to GDOE for the payment of promised compensation, civil service and court ordered claims, and merit bonuses. GDOE received \$1.3 million for merit bonuses going back to October 2009.

In FY 12, the following amounts were expended by GDOE through a variety of federal programs:

Grantor	Amount
U.S. Department of Agriculture	\$ 9,508,353
U.S. Department of Defense (JROTC)	\$ 346,578
U.S. Department of Education	\$ 55,590,790
U.S. Department of Health and Human Services	\$ 2,647,597
U.S. Department of Interior	\$ 7,103,468
<b>TOTAL</b>	<b>\$ 75,196,786</b>

**Independent Audit** The independent audit was performed by Deloitte & Touche. The independent audit received an unqualified opinion.





## UPDATES

### Guam Department of Education Management Team:

In January 2013, Dr. Jose Cruz and Peter Alexcis Ada were elected Guam Education Board Chair and Vice-Chair, after they and other members (Ronald Ayuyu, Lourdes Benavente, Maria Gutierrez, Albert San Agustin, May Camacho, Francis Santos, and Barry Mead) were duly sworn in to begin their 2-year terms. Camacho, Santos, and Mead serve as appointed GEB members.

### Project Malak:

Prior to FY13 year-end close, GDOE will upload its physical inventory and begin to utilize its Fixed Assets module in its FMIS. Employee trainings are conducted during breaks in the school calendar.

### Facility and School Upgrades Renovations and Expansions:

- *Untalan Middle School* faculty and students are expected to return to their Barrigada campus (Army Corps Drive) by the opening of the SY14-15; renovations and repairs are anticipated in June 2014.

- *Okkodo High School Expansion.* In August 2013, contractors placed the first roof panel at Okkodo High School, in what will ultimately result in \$21.8 million in new construction and an estimated 68,000 additional square feet to the school campus. Funding (P.L. 30-182) derived from QSCB (qualified school construction bonds) and tax-exempt lease certificates requires \$1.6 million in annual lease payments. Construction of 28 new classrooms, 9 labs, a culinary arts kitchen, and additional restrooms is expected to be completed summer 2014.



- *Southern High School.* A ribbon-cutting was held August 17, 2013 reopening Southern High School's gym and fine arts auditorium after nearly \$6.5 million in federal American Reinvestment & Recovery Act funding was used for repairs and renovations.



(Above) SHS students perform on the fine arts stage and watch Superintendent Fernandez catch a basketball on refurbished SHS gymnasium floor.

- *U.S. Army Corps of Engineers.* In June 2013, the U.S. Army Corps of Engineers completed a physical assessment, funded by the U.S. Dept of Interior, of 35 Guam's public schools identifying \$65 million in needed repairs.

- *School Security.* P.L. 32-9 provided \$800K to GDOE for school security, subject to a risk assessment of all public schools, and requiring the Guam Services Agency (GSA) to process the procurement. GDOE submitted the assessment to GSA in May 2013 and is awaiting the security services and equipment.

- *Possible Central Office Relocation.* GDOE is assessing relocating its Hagatna central offices (an estimated 100 employees), as public discussion and plans for revitalizing government buildings in Hagatna ensue.

### 9 GDOE Schools to Operate as Provision 2 Schools under CNP:

Beginning SY13-14 Astumbo, HB Price, Inarajan, J.Q. San Miguel, Merizo, Talofoto Elementary, Inarajan and Oceanview Middle, and Okkodo High schools will serve meals to all students at no charge as designated Provision 2 schools under GDOE's Child Nutrition Program (School Breakfast & National School Lunch programs). Anticipated savings (simplified paperwork, faster serving lines, reduced associated labor costs, improved economies of scale in per-meal costs) will help offset the cost differential.

### Curriculum and Assessment Standards:

During Spring 2013, the district held a series of professional development activities focused on the development of the district Curriculum Maps. These training events encompassed all grade levels in the areas of English/Language Arts, Math, Science, and Social Studies. District Curriculum Maps were released to all schools at the beginning of SY 2013-2014. Work is currently ongoing for the development of the Curriculum Guides. The district was able to pilot the newly developed criterion-referenced assessments to two high schools, three middle schools, and eight elementary schools in the areas of English/Language Arts (grades 1, 3, 4, 5, 6, 7, 8, and 10); Math (grades 3, 4, 5, 6, 7, 8, and 10); and Science (grades 5, 8, and 10). The continuation of Phase II, which includes the remaining grades in English/Language Arts, Math and Science and all grades in Social Studies are in the development stage and expect to be completed by Spring 2014.

**Federal Funding:** Table below shows GDOE's current FFY13 federal funding levels (major grants) as well as, anticipated FFY14 requests.

FEDERAL FUNDS	FFY 13	FFY 14 ANTICIPATED REQUEST
Consolidated Grants	\$20,290,400	\$20,084,934
Head Start	\$2,561,854	\$2,380,540
SPED Part B Grants to States	\$13,962,402	13,962,402
SPED Part C Infants & Families with Disabilities	\$1,448,962	\$1,448,962
Child Nutrition Program	\$9,500,000	Not Available

**Did you find this report informative? Is there other information you would like to see?**

**We appreciate your feedback. GDOE Management can be contacted at:**

Guam Department of Education, P.O. Box DE, Hagatna, Guam 96932 Email: [Superintendent@gdoe.net](mailto:Superintendent@gdoe.net) or visit our website at [www.gdoe.net](http://www.gdoe.net)

### References:

- Fernandez, JP (2012, October 30). Annual State of Public Education SY 2011-2012. Retrieved August 2013, from Guam Department of Education online website: <https://sites.google.com/a/gdoe.net/rpe/home/annual-state-of-public-education-report-asper/sy-2011-2012>
- Deloitte & Touche. (2012). *Financial Statements, Additional Information and Independent Auditor's Report.* Retrieved August 2013, from Guam Department of Education online website: <https://sites.google.com/a/gdoe.net/financial-administration/reports/audit-reports>

**"Our educational community prepares all students, promotes excellence, and provides support"**

